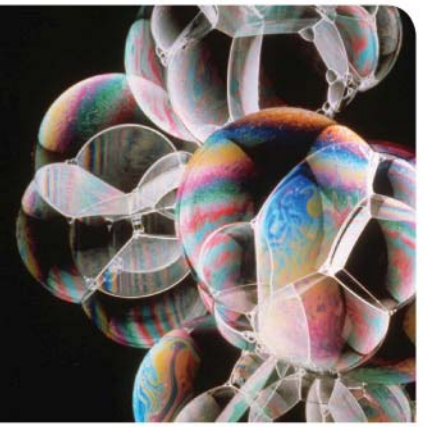




National Science Foundation
WHERE DISCOVERIES BEGIN



RECENT CHANGES TO NSF PROPOSAL & AWARD POLICIES

Data Management Plans Now Required in Proposal Supplementary Documents

NSF has made changes to how data management plans are submitted as required components of a proposal. All proposals must describe plans for data management and sharing of the products of research, or assert the absence of the need for such plans. FastLane will not permit submission of a proposal that is missing a Data Management Plan.

Proposals must include the plan as a supplementary document of no more than two pages. In addition, proposers are advised that data management requirements and plans specific to a certain Directorate, Office, Division, Program or other NSF unit are available on the NSF website at <http://www.nsf.gov/bfa/dias/policy/dmp.jsp>.

Additional information about the contents and submission of data management plans can be found in Chapter II.C.2.j of the Grant Proposal Guide in the NSF Proposal & Award Policies & Procedures Guide.

New NSF Cost Sharing Policy

NSF's cost sharing policy has been revised to implement the National Science Board's recommendations regarding cost sharing. The following changes have been implemented with the newest version of the Proposal & Award Policies & Procedures Guide (NSF 11-1), and went into effect for proposals submitted on or after January 18, 2011.

- ➔ Mandatory programmatic cost sharing will rarely be approved for an NSF program;
- ➔ Inclusion of voluntary committed cost sharing will be prohibited in solicited and unsolicited proposals;
- ➔ Organizations may, at their own discretion, continue to contribute any amount of voluntary uncommitted cost sharing to NSF-sponsored projects;
- ➔ NSF Program Officers may discuss the "bottom line" award amount with Principal Investigators, but may not renegotiate or impose cost sharing or other organizational commitments;
- ➔ NSF Program Officers may not impose or encourage programmatic cost sharing requirements

Additional information on the NSF cost sharing policy can be found in Chapter II.C.2.g(xi) of the Grant Proposal Guide in the NSF Proposal & Award Policies & Procedures Guide.

IMPORTANT LINKS:

National Science Foundation
www.nsf.gov

Division of Institution and
Award Support
www.nsf.gov/bfa/dias

Policy Office
www.nsf.gov/bfa/dias/policy

NSF Proposal & Award
Policies and Procedures
Guide (NSF 11-1)
http://www.nsf.gov/publication/s/pub_summ.jsp?ods_key=nsf11001

National Science Foundation
4201 Wilson Boulevard
Arlington, Virginia 22230
USA

TEL: (703) 292-5111
FIRS: (800) 877-8339
TDD: (800) 281-8749

Questions may be directed to
the Policy Office at NSF

Email: policy@nsf.gov
Phone: (703) 292-8243