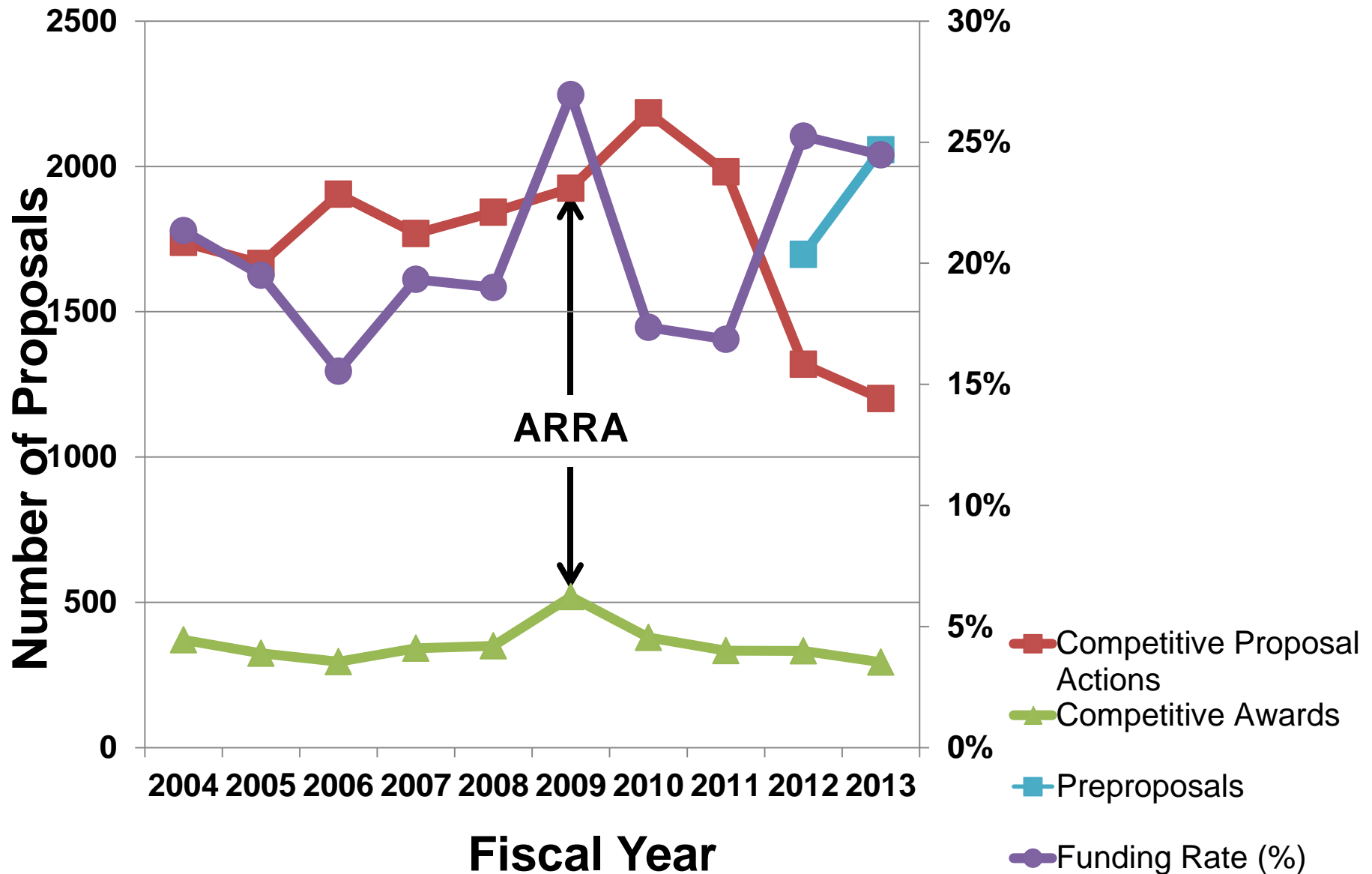


Integrative Organismal Systems Preliminary Proposal Pilot Data



MPS AC Meeting
April 3, 2014

Proposal Load & Success Rates



IOS Core Proposal Success Rate

IOS (all clusters)	#	%
Preliminary proposals received January 2012	1836	
Invitations May 2012	547	29.8%
Full proposals received (includes collaborative research) August 2012	634	
Proposals Funded October 2012-September 2013	175	27.6%
<i>IOS Overall (Core) Success Rate</i>		<i>8.2%</i>

Number of Proposal Submissions per Review Cycle as a PI or Co-PI

- 1900 Full proposals in 2011
- 1984 Pre-proposals in 2013

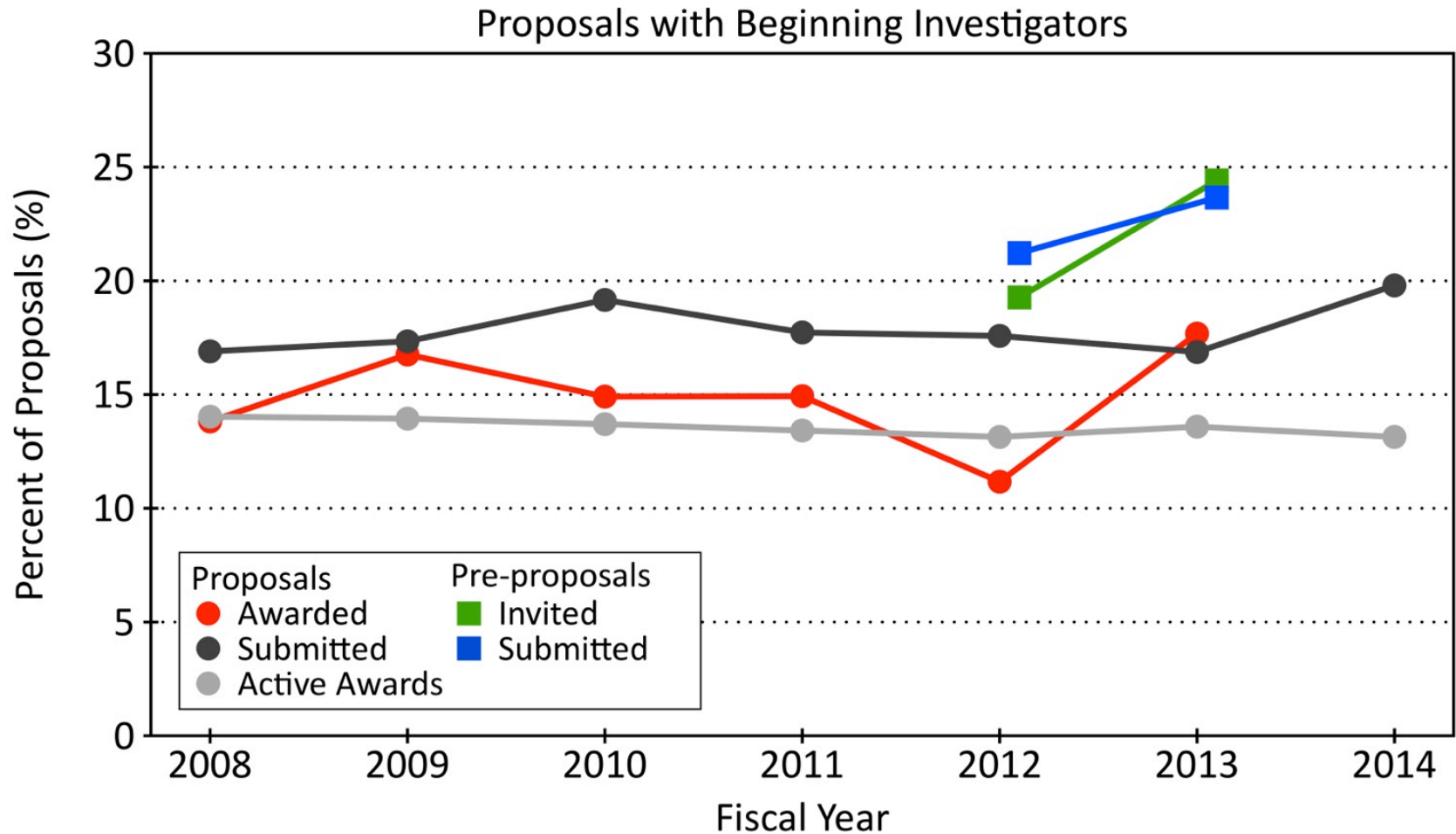
# Submissions in Review Cycle	Before (Full Proposal) 2008-2012	After (Pre-proposal) 2012-2013
1	96.0%	84.6%
2	3.7%	15.2%
3+	0.3%	0.2%

(data from FY 2008 to Now)

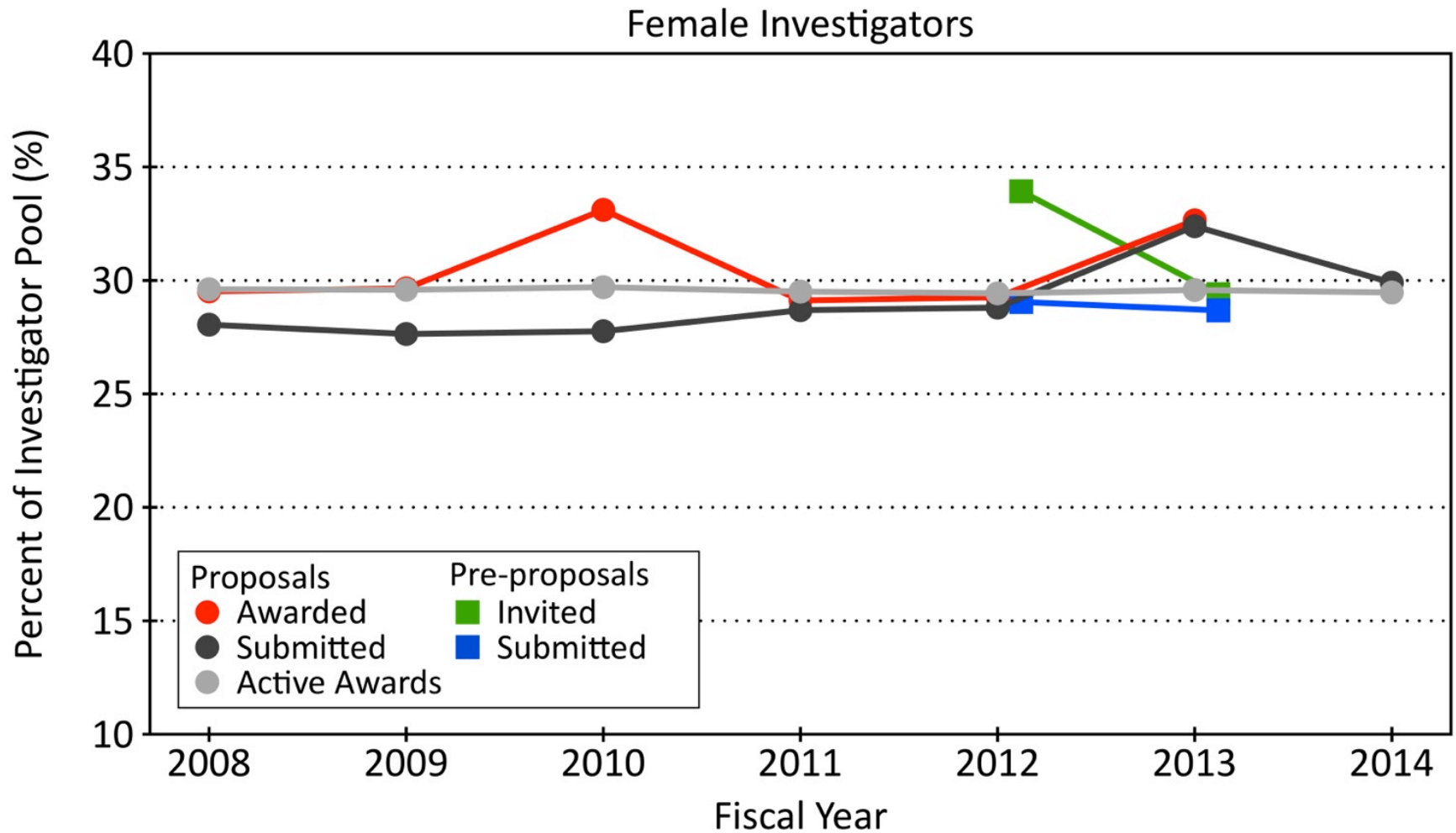
IOS Invite Tracking

IOS (all clusters)	% Existing Awards		% Preproposals		% Invites	
	2012	2013	2012	2013	2012	2013
Beginning Investigators	18.1	16.7	24.6	26.1	23.1	26.5
URMs	6.9	10.5	6.9	7.8	8.3	8.7
Women	35.0	33.5	35.6	33.6	41.3	35.8
EPSCoR	17.7	18.6	23.9	23.6	19.7	19.5
MSI	2.9	3.1	5.2	6.2	4.4	6.6
RUI	7.8	8.1	5.8	9.5	6.3	8.0
<i>Overall</i>					<i>29.4%</i>	<i>21.5%</i>

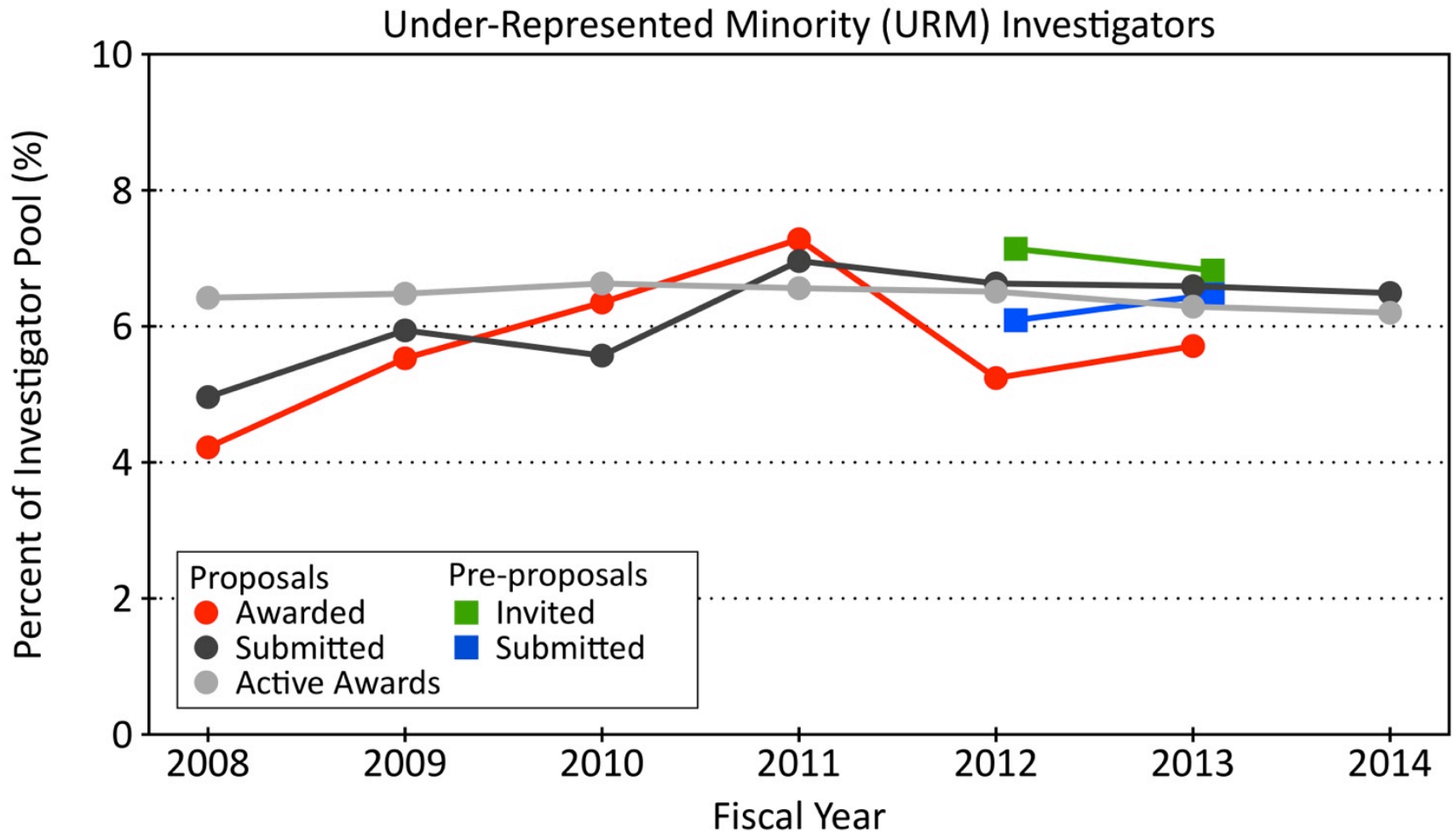
Beginning Investigators



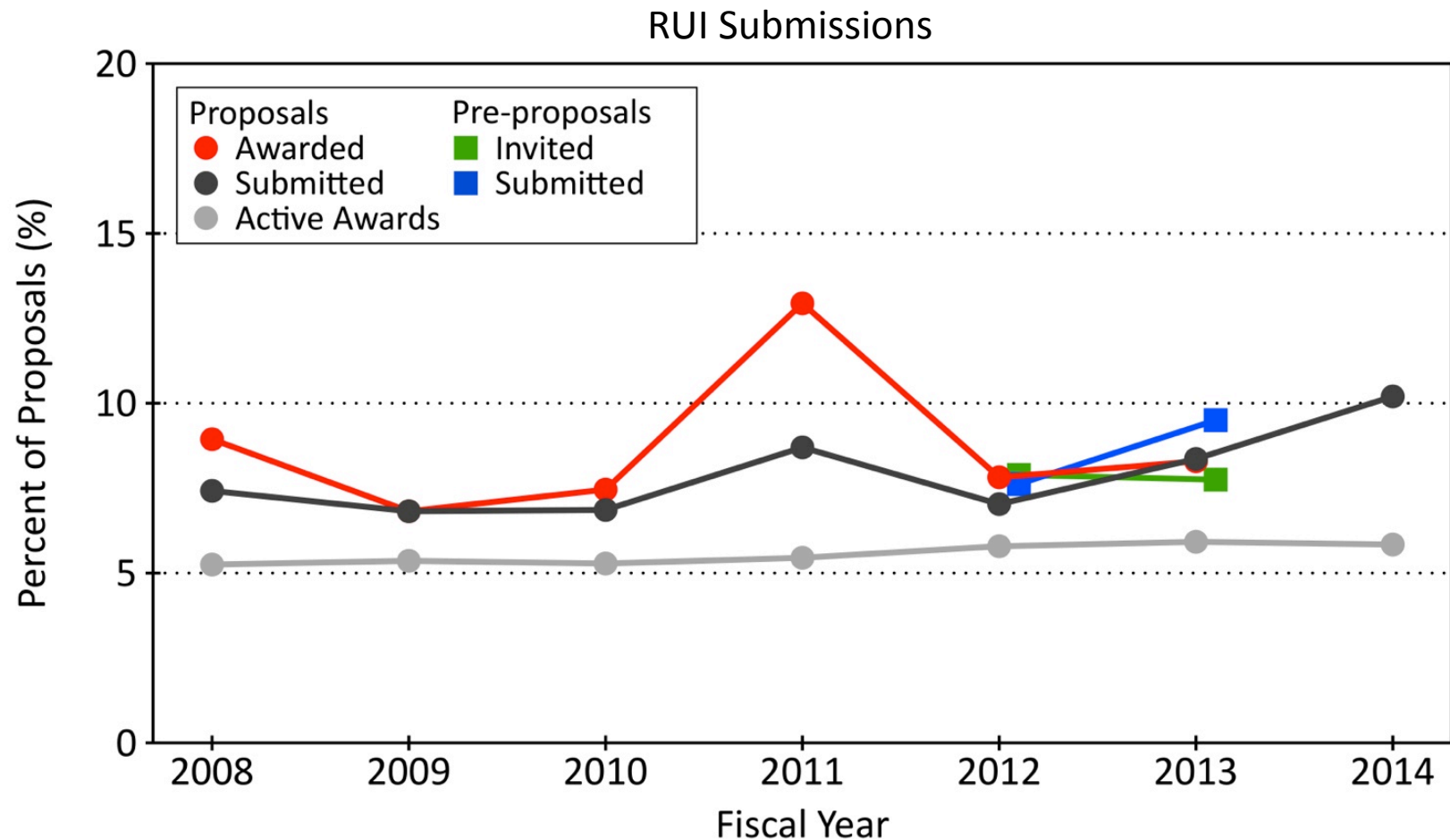
Female Investigators



Under-Represented Minorities

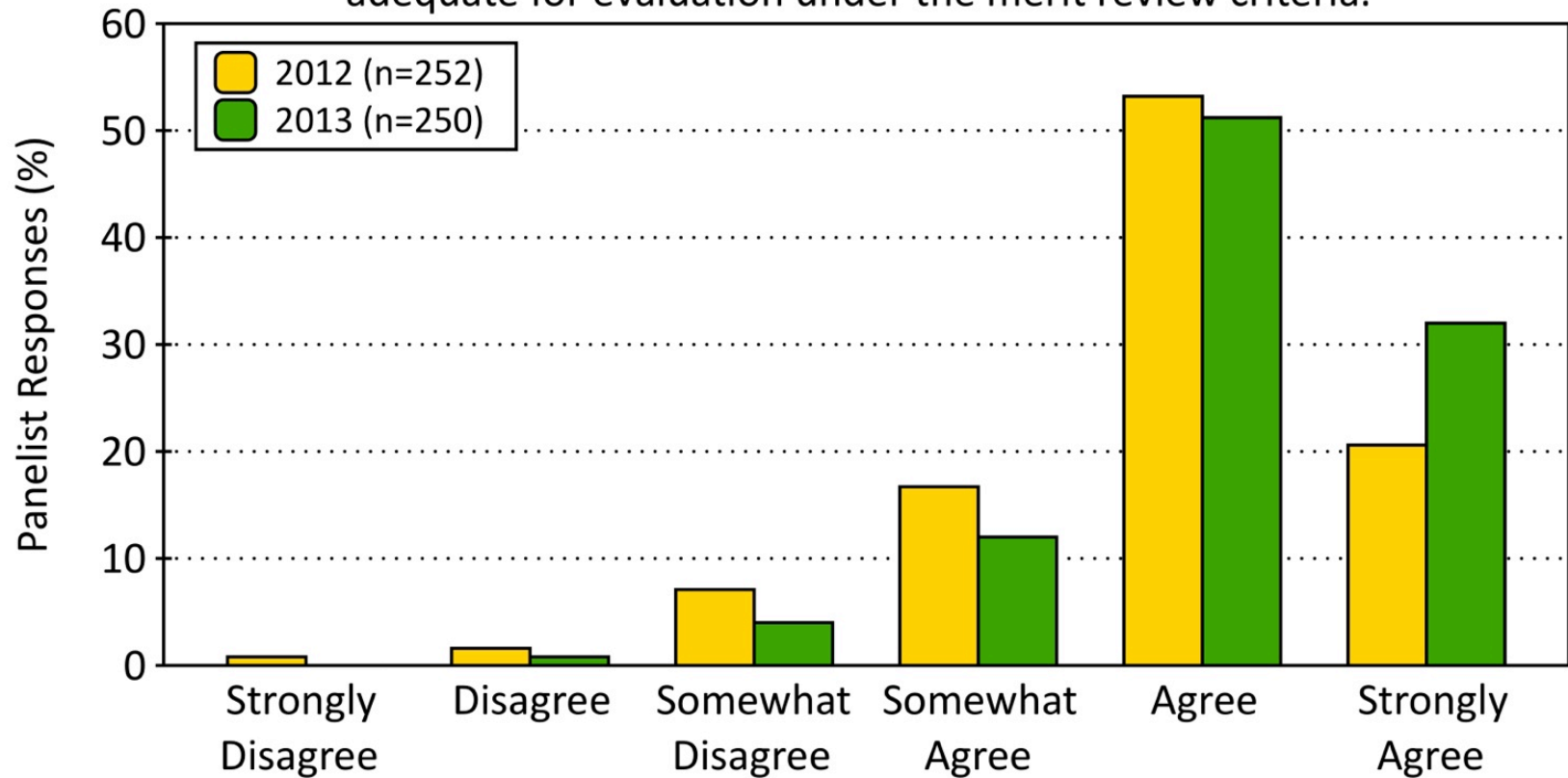


Proposals from Primarily Undergraduate Institutions



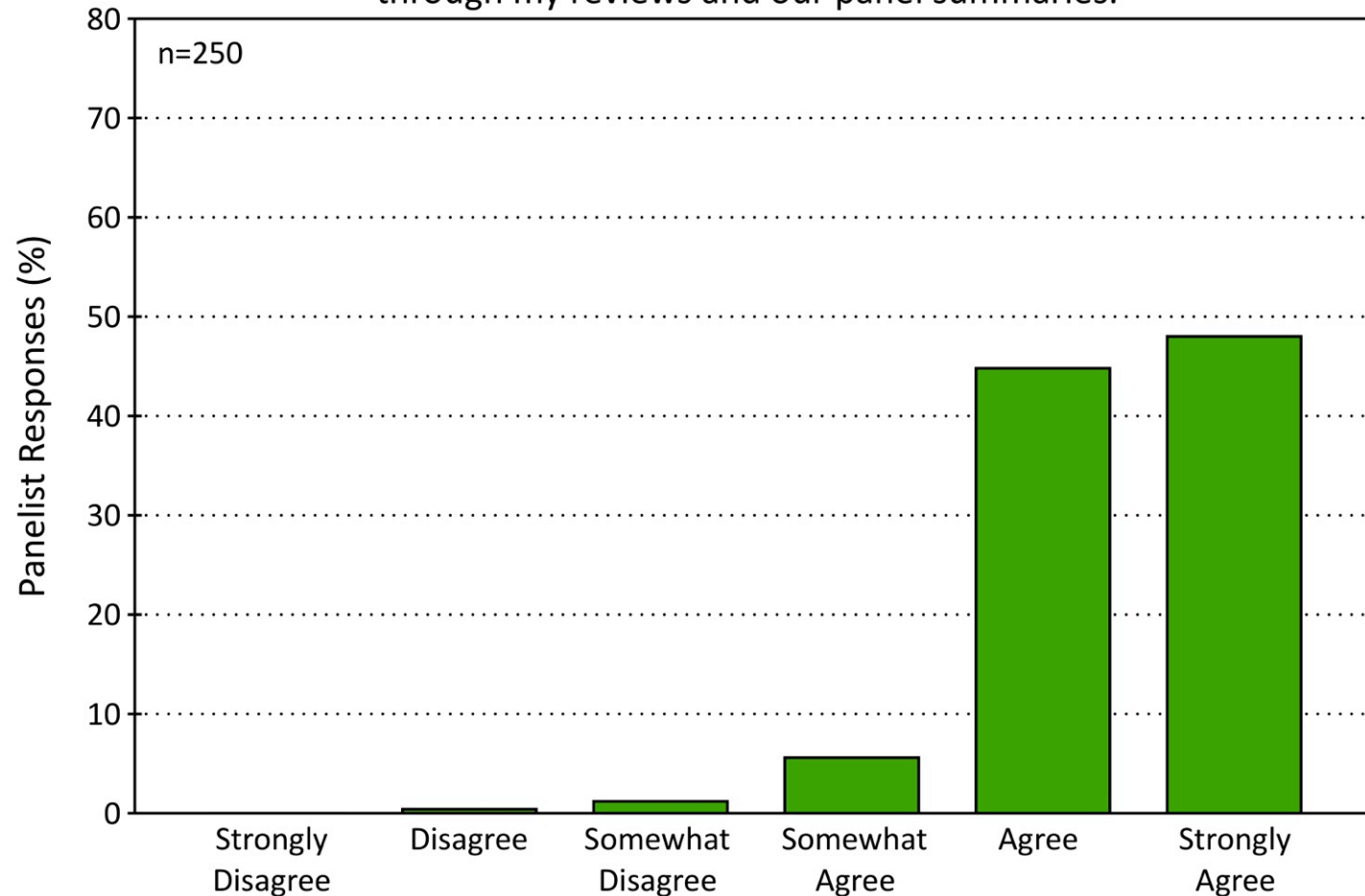
Adequate Content?

"I found the content provided by these preliminary proposals to be adequate for evaluation under the merit review criteria."

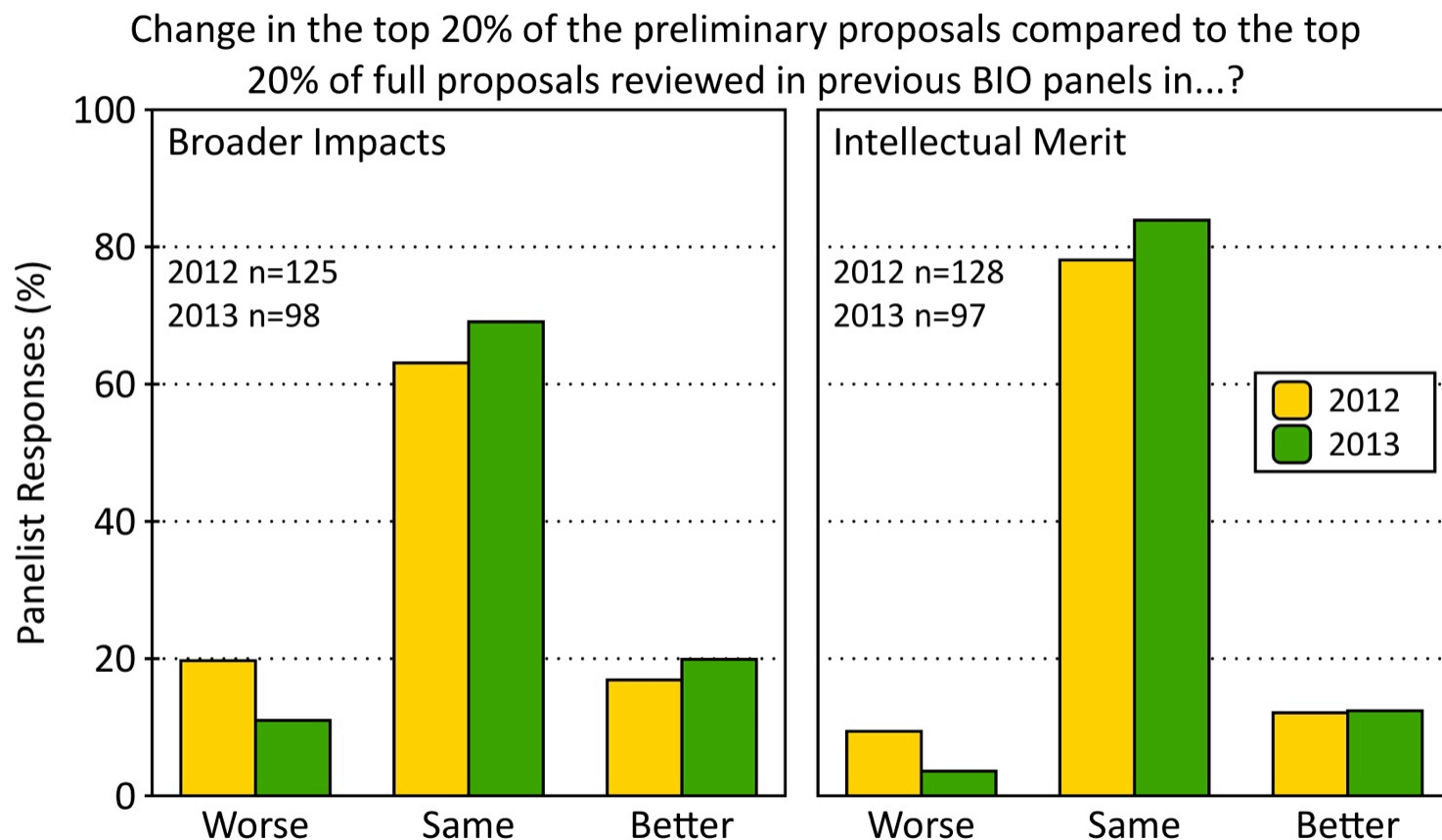


Opportunity To Provide Feedback?

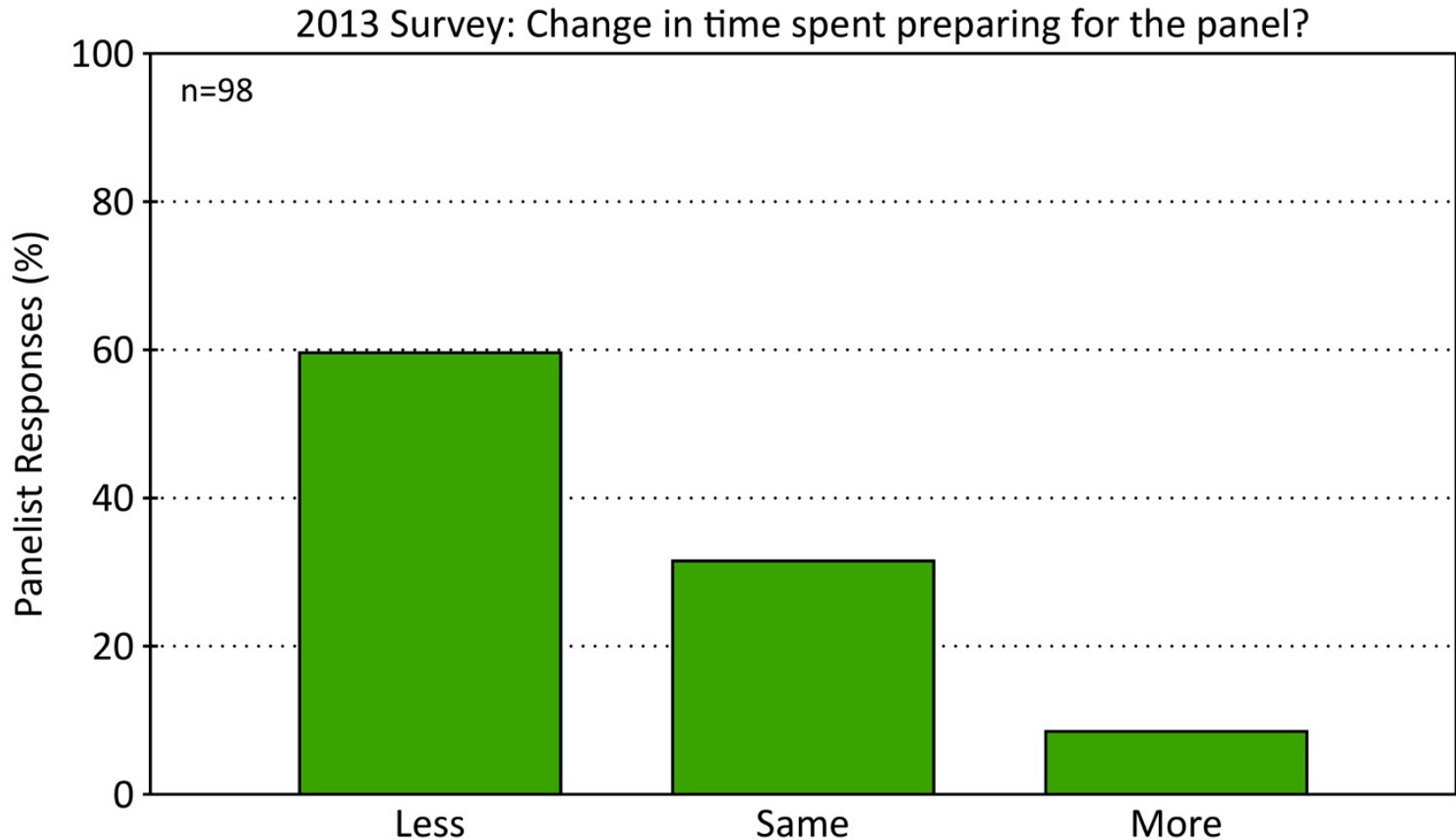
2013 Survey: "I believe I was able to provide useful feedback to PIs through my reviews and our panel summaries."



Change In Proposal Quality?



Review Preparation Time



IOS Submission Frequency

Twice Yearly Full Proposal System PI Submission Frequency (2009-2012)*			Pre-proposal PI Submission Frequency (2012-2013)		
Proposals/ Year	PI Count	% PIs	Pre-proposals/ Year	PI Count	% PIs
1	4958	82.84	1	4505	84.66
2	929	15.52	2	799	15.02
3	79	1.32	3	17	0.32
>3	19	0.312	>3	0	0

*From program data. For each PI, considers only years when a proposal was submitted

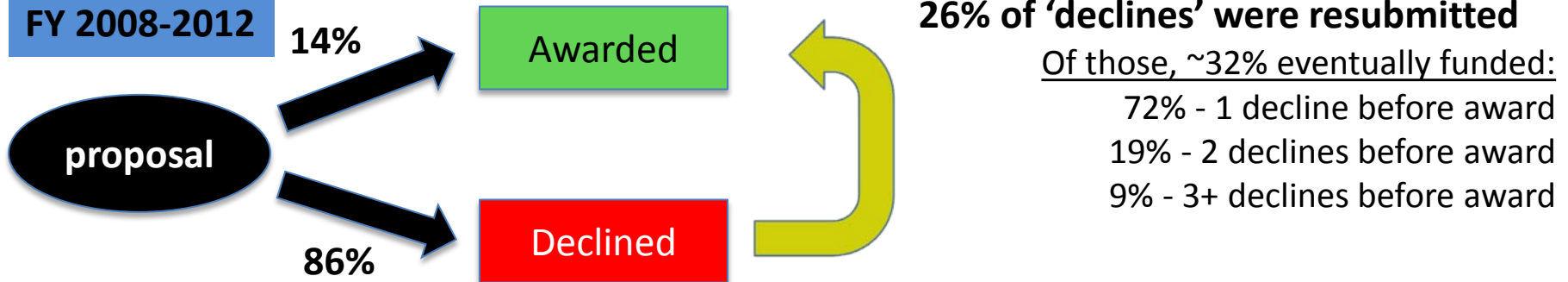
Ad hoc Review Requests

		Requested	Reviewed	Return %
2009-2011	Core	16,678	9,560	57.3
	Other	3,473	1,889	54.4
	Total	20,151	11,449	56.8
2012-2013	Core	1,880	1,111	59.1
	Other	2,221	1,189	53.5
	Total	4,101	2,300	56.1

Preliminary Analysis: Tracking the Fate of a Proposal

Before:

FY 2008-2012



After:

FY2013-

