

Frontier Research in the Earth Sciences FRES

Denny Geist

Maggie Benoit

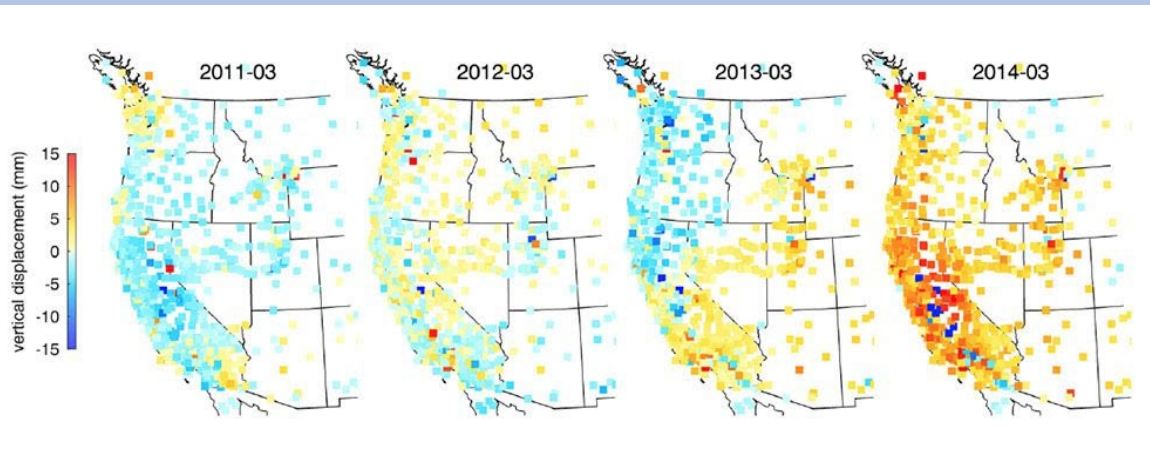
Richard Yuretich

Chris Simmons



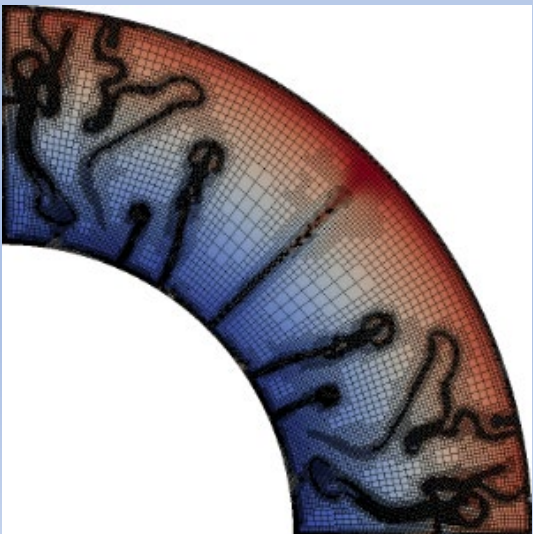
Goals of FRES

- Successor to Continental Dynamics, FESD, and IES.
- Funding of EAR-centric proposals.
- Large-scale projects, generally $> \$1\text{M}$.
- Most are interdisciplinary but not required.
- Fund projects that most core disciplinary programs cannot.



Successful Proposals

- 14 Funded Projects in 2 years
- 100% multi-investigator
- 100% creative and substantive broader impacts
- 80% international field work
- 100% multi-institutional
- Most multi-disciplinary
 - SGP = 12
 - PH = 12
 - TE = 4
 - CH, HS, GG, GLD = 3
 - GI = 1



Proposal Logistics

- \$3M max (including research platforms and facilities)
- 18 page project description
- 2 page management and integration plan
- 3 page results of prior support



Co-reviews and shares

- Sure! Mostly with BIO, OCE, and AGS.
 - (no sharing with EAR programs)
- Special requirements for use of NSF-supported facilities.



What makes a good project?



- Important questions. Game changers. Frontier topics. Potential for breakthrough.
- Visionary broader impacts.
- Importance of integration both logistically and intellectually.
- Hypothesis-driven and contingencies.
 - Connection between data and hypotheses.
- Strength of team.
- Needs to be compelling to both specialists and the wider community.



International Work

- Any funds going to international individuals or organizations must be clear and explicitly identified.
- Collaborations must be substantive (intellectual engagement) and fully justified.
- Permissions and permits.



Covid Issues

- See NSF.gov for changing Foundation-wide policies.
- Current strategy is that travel and access to facilities will be attainable over the lifetime of the grant.
- Currently require contingency plans for awards.
- PIs' discretion as to addressing in the proposal.



Broader impacts examples:

- Formative experience for K-12 teachers. Salary. International field work.
- Diversifying the field. Substantive.
- Creating products that others will use.
- Exhibits and documentaries.



Questions?

- For questions that might apply to others, ask now in the chat.
- For questions that are very specific to your project, please write us at *fres@nsf.gov*



Where we aren't

Thank you!

Denny, Maggie, Richard, and Chris

