



NATIONAL SCIENCE FOUNDATION

CMMI BRITE SOLICITATION

NSF 22-559

Submission Deadline: April 25, 2022



Boosting Research Ideas for Transformative and Equitable Advances in Engineering (BRITE) (NSF 22-559)

Primary Objective: The goal of this solicitation is to enable and create opportunities to advance scientific discoveries and research using a variety of new approaches that harness the entire national talent ecosystem of experienced faculty.

Eligibility: a) Tenured professor (associate level and higher) or equivalent at a qualifying institution, b) Single PI (no co-PI/collab. proposals), c) PI's are restricted to 1 active BRITE award

Highlights: a) Targets the mid-career and higher stage, b) provides PI time and resources, c) has 4 distinct Tracks, c) supports advancement and research exploration otherwise not likely to occur



CMMI BRITE: All Core Programs Participating

Advanced Manufacturing (AM)

Dynamics, Control and Systems Diagnostics (DCSD)

Mind, Machine, and Motor Nexus (M3X)

Biomechanics and Mechanobiology (BMMB)

Mechanics of Materials and Structures (MoMS)

Engineering for Civil Infrastructure

Civil Infrastructure Systems (CIS)

Engineering Design and Systems Engineering (EDSE)

Humans, Disasters, and the Built Environment (HDBE)

Operations Engineering (OE)

Robotics



BRITE TRACKS

- Synergy Track (2 years)
- Pivot Track(3 years)
- Relaunch Track (3 years)
- Fellow Track (5 years)

Anticipated Funding (\$10M)

2-5 Fellow awards

8- 10 awards per track (Synergy, Pivot, Relaunch)

Budget Allocation

All tracks: up to 100k-200k per year



Track Name	Concept	Description
Synergy	Reflection	Synthesis borne out of prior disaggregated research outcomes
Pivot	Revector	New areas/High risk
Relaunch	Revitalize	Re-engage in cutting edge research
Fellow	Blue Sky	Innovation/High risk ideas



Synergy track

The **BRITE Synergy track** is intended to support synthesis proposals borne out of a disaggregated and accumulated body of prior research outcomes that remain unstudied and unprobed to forge or conceptualize a novel direction, methodology, paradigm, or outcome that is more than the sum of the parts.

Pivot Track

The **BRITE Pivot track** is intended to enable researchers to quickly adapt to the fast-moving pace of research and create new knowledge and research products in their field by infusing new concepts from a different discipline or sub-field.



Relaunch Track


The **BRITE Relaunch track** is intended to support experienced researchers, who have had a pause in research activity, to relaunch back into active research, and to diversify the experiences of the nation's STEM researchers.

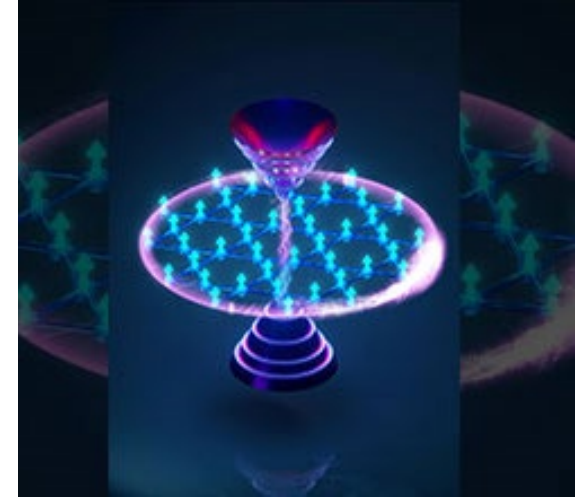
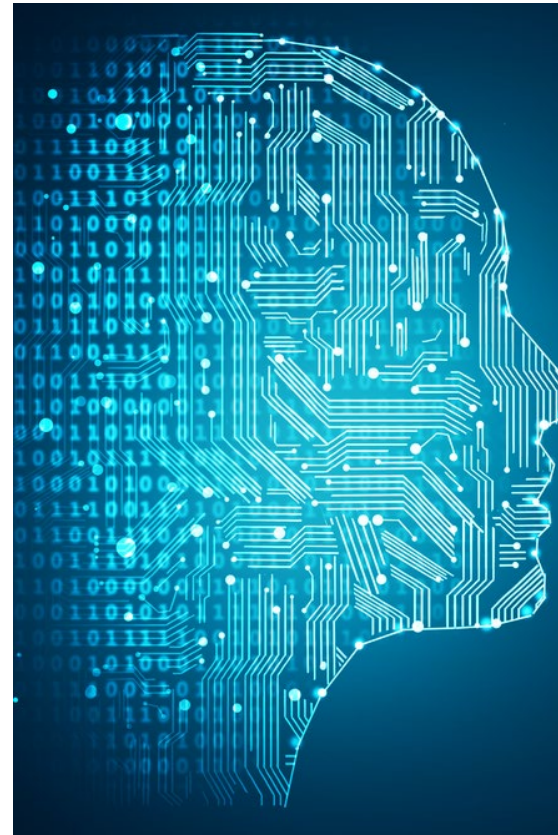
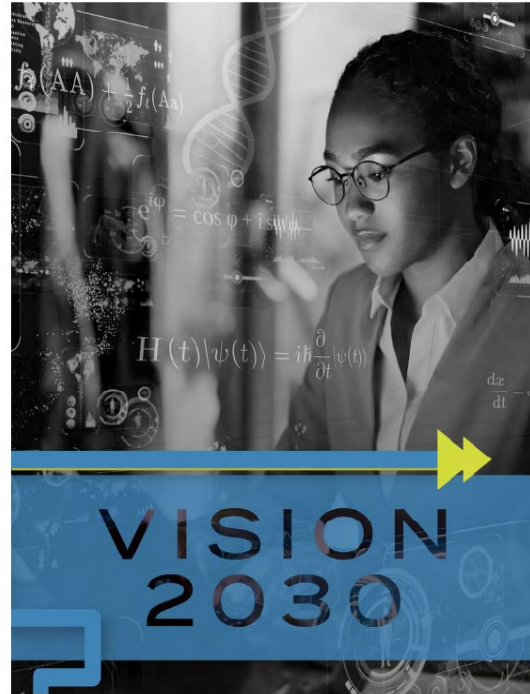
Fellow Track

The **BRITE Fellow track** is intended to support established researchers who have demonstrated impact to request extended time and freedom to use their intellectual creativity to explore divergent, bold, and ambitious research ideas where the expected scientific outcomes are highly uncertain and, therefore, high-risk.





 NATIONAL SCIENCE BOARD



NSF STRATEGIC GOALS



What's new in FY22...

Overall

- Earlier Submission Date
- Supplementary document clarification
 - Collaborators and Affiliations document is required
- Allowed 1 detailed collaborator letter
- DEI language: revised to emphasize individual PI scope



April 25,
DEADLINE

What's new in FY22...

Relaunch Track

- Postdoc/collaborator support might be appropriate

Synergy Track

- Added language to distinguish from Pivot

Pivot Track

- Revised to emphasize that PI's should describe the originality of the Pivot
- Postdoc/collaborator support might be appropriate

What's new in FY22...

- Pivot, Synergy, Fellow: *PIs are strongly encouraged to determine the suitability of their BRITE proposal by sending a 1 page project summary to brite@nsf.gov.*

BRITE Solicitation: Submission Instructions

1. The title must begin with “BRITE” and the track name.

2. In addition to the PAPPG requirements, proposals must also include the following sections:
 - Past Contributions
 - Research Approach and Research Plan
 - Track Relevance
 - Outcomes
 - DEI Plan

3. Additional Supplementary Documentation
 - Departmental Letter (2 sentence format)
 - List of Project Personnel



Submitting to the BRITE Solicitation: BUDGET

*Funds are to support the researcher

Budget allocation for all tracks: up to 100k-200k per year

Time (PI salary): Funds include substantial salary support over the course of the grant.

- **Synergy, Pivot, Relaunch:** can ask for 1, 2 or more months of salary (summer or teaching release)
- **Fellow:** minimum of 2 months/year

Resources: research advancement, training, student support



Questions?

All inquiries should be directed to brite@nsf.gov

PROPOSAL DEADLINE: [April 25, 2022](#)

WEBINAR SLIDES will be posted afterwards.

