

Division of Environmental Biology (DEB) Virtual Office Hour

Welcome to the DEB Virtual Office Hour. We will begin soon.

Please submit questions via the Q&A box available to you on WebEx. Please set notification to 'All Panelists'



Division of Environmental Biology (DEB) Virtual Office Hour – Welcome!

Program Directors in attendance today

- Matt Olson – Evolutionary Processes (matolson@nsf.gov)
- Kendra McLauchlan – Ecosystem Sciences (kmclauch@nsf.gov)
- Ford Ballantyne – Ecosystem Sciences (fballant@nsf.gov)
- Doug Levey – Population and Community Ecology (dlevey@nsf.gov)
- Leslie Rissler – Evolutionary Processes (lrissler@nsf.gov)
- Sam Scheiner – Evolutionary Processes (sscheine@nsf.gov)
- Chris Schneider – Systematics and Biodiversity Sciences (cjschnei@nsf.gov)

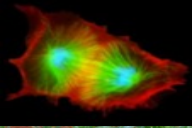
Facilitators – Christina Washington, Alina Dallmeier, and Megan Lewis



DEB Virtual Office Hour

Questions:

- Submit your questions via the Q&A box on your screen and set to “All Panelists”
- For recently asked questions and future office hour topics, see the DEB blog (<https://debblog.nsfbio.com/>)
- For specific questions about your project, please contact a Program Director





DEB Virtual Office Hour

- DEB Office Hours: second Monday of each month, 1-2 pm EST

Upcoming Topics:

Feb 10: Rules of Life/Understanding the Rules of Life

Mar 9: RAPID/EAGER/Workshops

Apr 13: OPUS

May 11: CAREERs

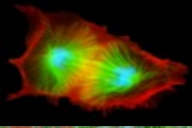
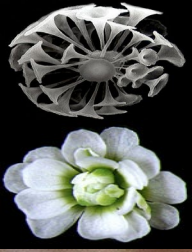
June 8: BIO Postdoc Program



DEB Virtual Office Hour

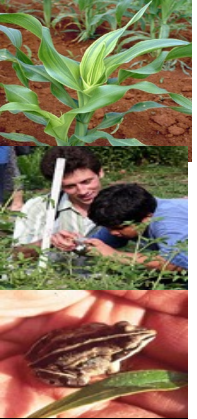
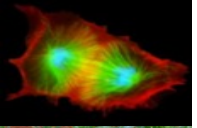
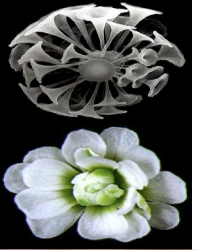
Today's Topics:

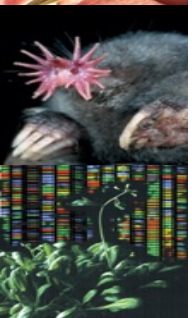
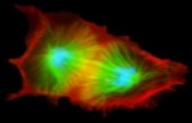
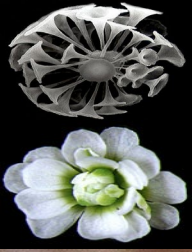
- Bridging Ecology and Evolution Track in DEB Core Solicitation
- Demystifying the Co-Review Process
- Open question and answer period



Bridging Ecology and Evolution

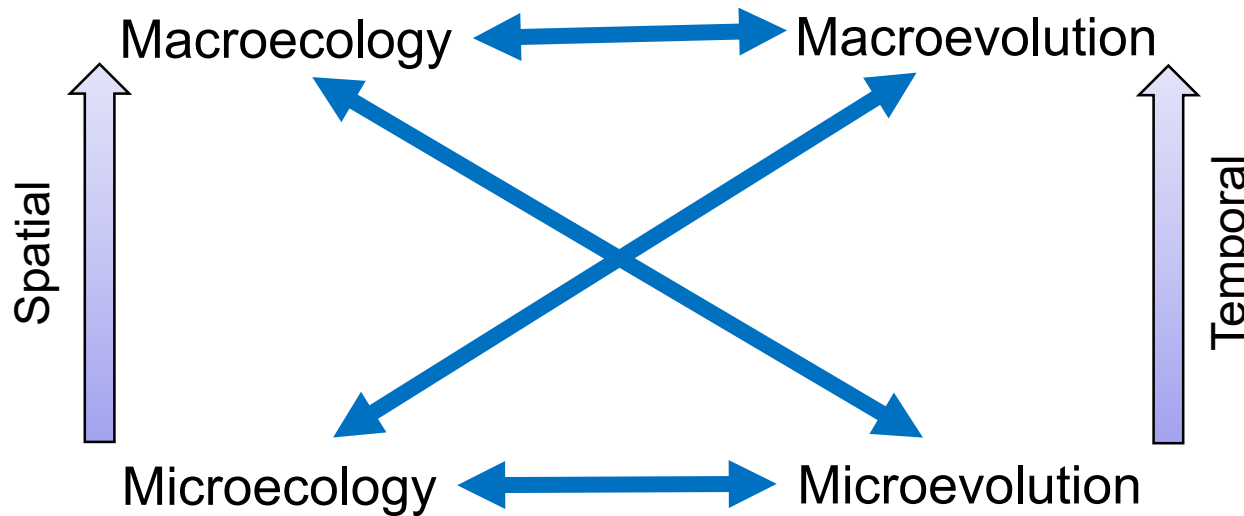
- Dobzhansky (1964) – “Nothing in biology makes sense except in the light of evolution.”
- Grant & Grant (2008) – “Nothing in evolutionary biology makes sense except in the light of ecology.”
- Pelletier, Garant & Hendry (2009) – “Nothing in evolution or ecology makes sense except in the light of the other.”





Bridging Ecology & Evolution

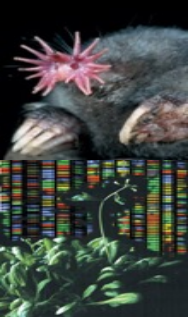
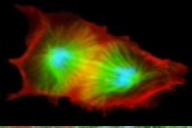
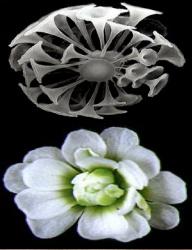
- **BEE – Special category for proposals within the DEB solicitation**



- Encourages projects that merge ecological and evolutionary perspectives and approaches to address important questions at the intersection of population, community and ecosystems ecology, and microevolution, macroevolution, systematics, biogeography and paleobiology.

Bridging Ecology and Evolution

- Example of appropriate topics include, but are not limited to:
 - Demography / population ecology and microevolution (e.g., eco-evo dynamics *sensu* [Schoener 2011](#); [Hendry 2017](#))
 - Phylogenetic community ecology
 - Evolution of Ecological Traits (morphospace, niches, dispersal, # ecological linkages, range size, etc.) and diversification rates
 - Evolution and ecosystem ecology (e.g., rapid evolution of microbes and impacts on ecosystem processes)
 - Macroecology and Macroevolution
 - Interaction of ecology and evolution in determining macroecological or biogeographic patterns
 - Interaction of ecology and evolution to produce macroevolutionary patterns of extant or extinct organisms (e.g., impacts of evolution of ecological traits on diversification rates and patterns).





Demystifying The Co-Review Process

- ***Which proposals are co-reviewed?***
 - science that could make advances in multiple programs
 - integrative or interdisciplinary studies.
- ***How does co-review work?***
 - the primary program reads the proposal and invites additional relevant program(s) to participate in the review process
 - If secondary program(s) accept co-review, mechanism ranges from suggesting ad hoc reviewers to taking the proposal to their own panel
 - Co-review opens the door to co-funding (more later).





Demystifying The Co-Review Process

- ***Can I decide where my proposal gets co-reviewed?***
 - ***Kind of.***
 - You can suggest relevant programs on the Cover Sheet.
 - You can discuss your research idea prior to submission with a Program Officer from each program to assess suitability
 - Ultimately, the decision whether a proposal is co-reviewed rests with the Program Officer(s)
- The only exception to this process is the [Rules of Life](#) track, which requires that you specify a co-reviewing program in a BIO Division other than DEB and that you explain how your proposed work bridges the two programs.





Demystifying The Co-Review Process

- ***What happens after co-review?*** If the proposal is favorably reviewed by one or both programs, either or both programs may choose to fund the project. Thus, one of the advantages of co-review is that multiple programs might be willing to help fund the project. Funding contributions vary, but co-funding often allows DEB to support more principal investigators and more individual projects.
- ***Isn't it risky to expose my proposal to scrutiny by so many reviewers?*** As we all know, an important aspect of promoting the progress of science is getting fair, constructive feedback. For a subset of the proposals we receive this can only be achieved by expert input and discussion reflecting the breadth of topics covered in the proposal (hence the co-review).
- ***But, the risk I have concerns funding – are co-reviewed proposals less likely to be funded?*** We regularly monitor funding rates of co-reviewed and non-co-reviewed proposals. We can say with confidence that co-reviewed proposals have the same funding rates (or slightly higher) as proposals that are not co-reviewed.





Recent Solicitations and DCLs

Remember – Core DEB solicitation (20-502) has no deadlines and no submission limits.

- NSF 20-525 – Faculty Early Career Development Program (CAREER) – **Deadline July 27, 2020**
- NSF 20-524 – Dimensions of Biodiversity – **Deadline March 27, 2020**
- NSF 20-514 – Navigating the New Arctic – **Deadline Feb. 11, 2020**, email NNA@nsf.gov with questions
- NSF 20-513 – URoL: Microbiome Theory and Mechanism, LOI due by **Jan. 17, 2020**
- NSF 20-506 – Macrosystems Biology and NEON-Enabled Science (MSB_NES) deadline **Jan. 24, 2020**
- DCL: Research Opportunities Related to Coastlines and People (CoPe)
- Partnerships for Enhanced Engagement in Research (PEER) - funds collaborations with scientists in developing countries **Feb. 10, 2020**

Find links to all recent solicitations and Dear Colleague Letters at the bottom of the DEB webpage (WebSearch: NSF DEB) under Funding Opportunities and Popular Links

