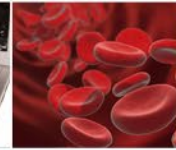




WHERE DISCOVERIES BEGIN



Historically Black Colleges and Universities Undergraduate Program (HBCU-UP):

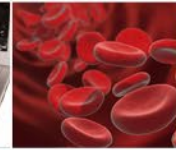
Dear College Letter: Supporting Impactful Research, Undergraduate Education and Capacity Building at HBCUs (NSF 22-069)

Carleitta Paige-Anderson, LeRoy Jones II, Jeremy Guinn

**National Science Foundation
Directorate for Education and Human Resources
Division of Human Resource Development**

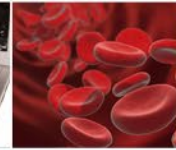
[PAPPG \(NSF 22-1\) dated October 4, 2021](#)

[Dear Colleague Letter: Supporting Impactful Research, Undergraduate Education and Capacity Building at Historically Black Colleges and Universities \(HBCUs\) \(nsf22069\) | NSF - National Science Foundation](#)



Zoom Etiquette

- **For a smooth experience, participants should:**
- Update name to include institution
 - Example: AU-Jane Doe; School-Name
- Mute audio when not speaking, and vice versa
- Communicate via Chat during presentation
 - Select Everyone: general questions/comments
 - Select Program Officer: private/personal situations
- Start the Chat text with the recipient's name
- Use “raise hand” function to engage during open discussion, unmute when called upon

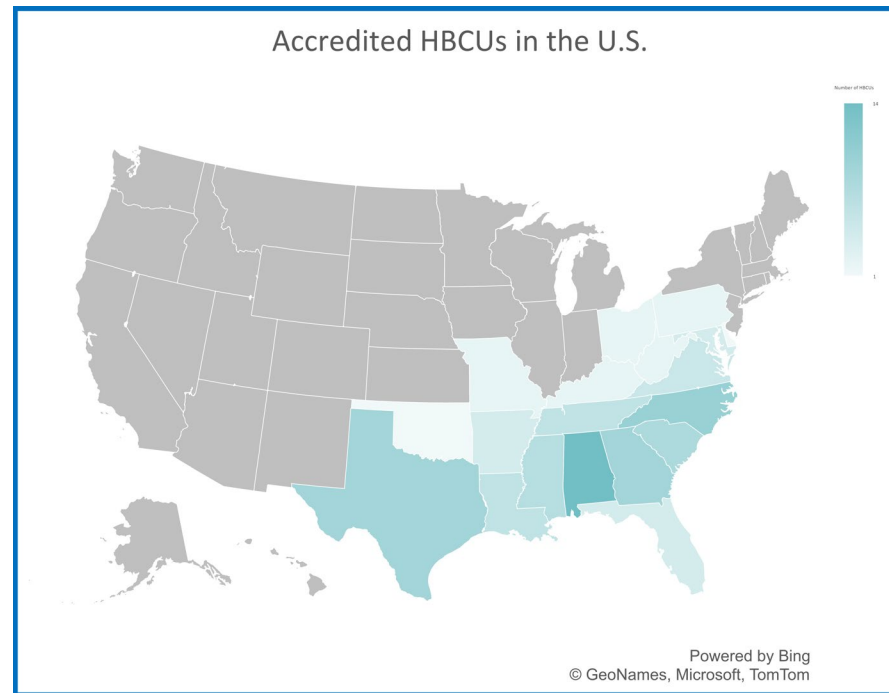


Webinar Agenda

- Historically Black Colleges and Universities Undergraduate Program (HBCU-UP) Overview
- Dear Colleague Letter: NSF 20-069 - PAPPG 22-1 Funding Opportunities
 - Supplemental Funding
 - New Proposals
- Discussion: Questions and Answers (Break-Out Rooms)



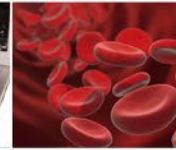
Historically Black Colleges and Universities Undergraduate Program (HBCU-UP)



Goal: To enhance the quality of undergraduate STEM education and research at HBCUs in order to broaden participation in the nation's STEM workforce and STEM graduate programs.



WHERE DISCOVERIES BEGIN



HBCU-UP

Supports development, implementation, and the study of evidence-based, innovative models and approaches to prepare HBCU undergraduates for the STEM workforce.

- ✓ Innovation in instruction and curriculum development
- ✓ STEM research experiences for undergraduates
- ✓ Critical transitions (K-12 to undergraduate, 2-year to 4-year, retention from freshman to sophomore, undergraduate to graduate)
- ✓ STEM faculty professional and leadership development
- ✓ Enhance STEM faculty research (RIA, EiR)
- ✓ Research capacity building
- ✓ Broadening participation research in STEM Education
- ✓ STEM teacher preparation

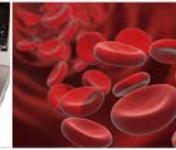


HBCU-UP Funding Tracks NSF 20-559

- Broadening Participation Research in STEM
- Research Initiation Awards
- HBCU-Excellence in Research*
 - HBCU-EiR is described under NSF solicitation [20-542](#)
 - Managed by the Office of Integrative Activities
- Targeted Infusion Projects
- Implementation Projects
 - Achieving Competitive Excellence (ACE)
- Broadening Participation Research Centers

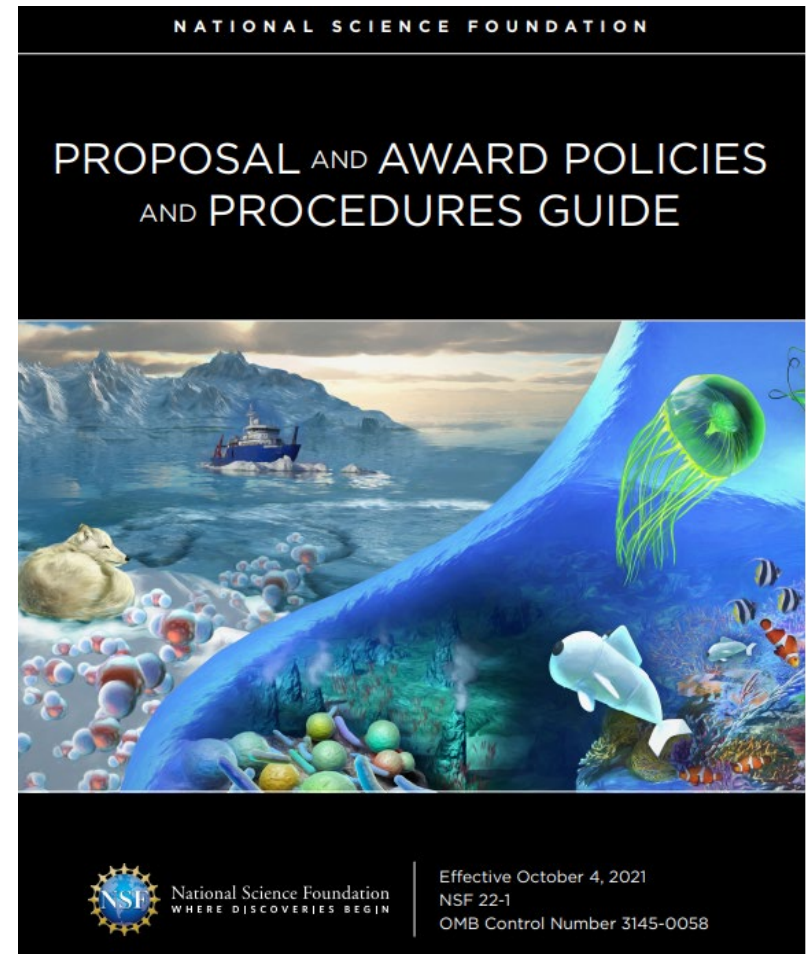


WHERE DISCOVERIES BEGIN



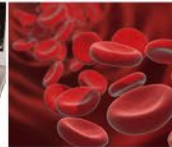
DCL: NSF 22-069

- **Supplemental Funding**
 - Submit via FASTLANE
 - Submissions restriction to organizations that have an active HBCU-UP award
- **New Proposals:** Encourages submissions beyond the scope of the funding tracks described in the HBCU-UP program solicitation [NSF 20-559](#)
 - Submit via Research.gov
 - Select the [PAPPG 22-1](#) as the funding opportunity number
 - EHR>HRD>HBCU-UP Program





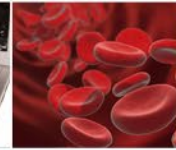
WHERE DISCOVERIES BEGIN



DCL: NSF 22-069

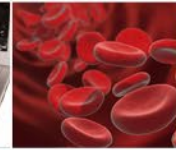
Funding Mechanism	PAPPG Chapter/SECTION Reference
Supplemental Funding	
Supplement to Current Award	VI.E.5
Career Life Balance	II.E.8
Grant Opportunities for Academic Liaison with Industry (GOALI)*	II.E.5
Facilitation Awards for Scientists and Engineers with Disabilities (FASED)*	II.E.7
New Proposals	
Planning	II.E.1
Rapid Response Research	II.E.2
Early-Concept Grants for Exploratory Research	II.E.3
Research Advanced by Interdisciplinary Science and Engineering (RAISE)	II.E.4
Ideas Lab	II.E.6
Conference	II.E.9
Equipment	II.E.10
Travel	11.E.11

*GOALI and FASED requests may also be made in conjunction with new proposals.



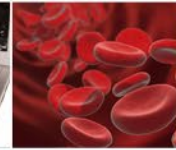
Supplemental Funding: Supplement to Current Award

- To assure adequate completion of the original scope of work – must be adequately justified
- Small amounts of supplemental funding and up to six months of additional support may be requested
- Requests should be made at least 2-months prior to the need
- Program Officers may make decisions without merit review for small requests
 - Larger requests may require external merit review



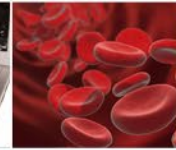
Supplemental Funding: Supplement to Current Award

- Submit electronically via Fastlane
- Include
 - Summary of the proposed work
 - Justification of the need for supplemental funds
 - Budget and budget justification
- NSF will not approve requests for supplemental support to defray the cost of increases in salaries, wages or staff benefits or for additional indirect cost reimbursement
- If approved, the Grants and Agreements Officers will amend the grant to provide additional funding



Supplemental Funding: Career Life Balance

- Primary dependent care responsibilities, or other family considerations, pose unique challenges to the STEM workforce
- Research award recipients may request supplemental funding to:
 - Support additional personnel to sustain research when the PI, co-PI or other member of the senior personnel is on family leave
 - Support additional personnel to sustain research while a post-doctoral researcher or graduate student being supported by NSF is on family leave



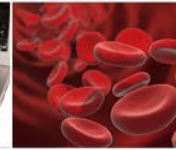
Supplemental Funding: Career Life Balance

- Submit electronically via Fastlane
- May include funding for up to six months (not to exceed duration of family leave) of salary support or stipend maximum of \$30,000 in direct costs (plus indirect costs, where appropriate)
- Usually, will be reviewed internally unless the program officer determines that the advice of external reviewers is essential
- Include:
 - Description of how the technician, research assistant, or equivalent would be used to sustain the research (do not disclose rationale for leave)
 - Budget and Budget justification
 - Proposed time period
 - Authorized Organizational Representative Statement



New Proposal: Grant Opportunities for Academic Liaison with Industry (GOALI) Proposal

- Seeks to stimulate collaboration between academic research institutions and industry
 - Engagement in research that is industrially relevant (integration of research and education needs)
- Can be a full proposal or supplemental funding request
- Focus areas:
 - Interdisciplinary university-industry teams to conduct collaborative research projects
 - Faculty, postdoctoral fellows and students conduct research and gain experience in an industrial setting
 - Industrial scientists and engineers bring industry perspective and integrative skills to academe
- NSF funding can be used for university research/education activities, but NOT permitted to support the industrial partner



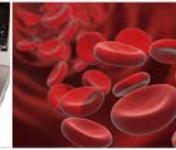
GOALI Proposal

New Proposal (Research.gov)

- Requests are made in conjunction with regular competitive proposals
- At least one industrial co-PI must be listed on the cover sheet (although can not be supported by NSF funds)
- Project Description (15 pages) – describe the university-industry interaction
- Confirmation Letter – from the industrial partner outlining the degree of industrial participation
 - Upload as “GOALI-Industrial PI Confirmation Letter” under supplementary documentation
- Signed university/industry intellectual property agreement

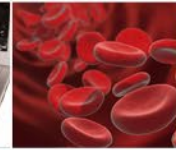
Supplemental Funding Request (Fastlane)

- Currently funded NSF research project
- Brief description of the proposed activity
 - University-industry interaction
- Budget and budget justification
- Confirmation Letter
- Signed intellectual property agreement



New Proposal: Facilitation Awards for Scientists and Engineers with Disabilities (FASSED) Proposal

- Reduce or remove barriers to participation in research and training by persons with physical disabilities by providing special equipment and assistance
- Encourage persons with disabilities to pursue careers in science and engineering by stimulating the development and demonstration of special equipment that facilitates their work performance
- Eligibility:
 - PIs
 - Other Senior personnel
 - Graduate students
 - Undergraduate students



FASED Proposal

New Proposal (Research.gov)

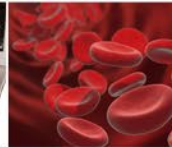
- Requests are made in conjunction with regular competitive proposals
- Funds may be requested to purchase special equipment, modify equipment, or provide services - specifically for the proposed work
- The specific nature, purpose and need for such equipment or assistance should be described in the project description
- No budget maximum

Supplemental Funding Request (Fastlane)

- Currently funded NSF research project
- Brief description of the request
- Budget and budget justification
- Must be submitted 2-months in advance before needed



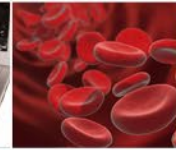
WHERE DISCOVERIES BEGIN



DCL: NSF 22-069

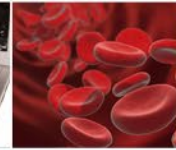
Funding Mechanism	PAPPG Chapter/SECTION Reference
Supplemental Funding	
Supplement to Current Award	VI.E.5
Career Life Balance	II.E.8
Grant Opportunities for Academic Liaison with Industry (GOALI)*	II.E.5
Facilitation Awards for Scientists and Engineers with Disabilities (FASED)*	II.E.7
New Proposals	
Planning	II.E.1
Rapid Response Research	II.E.2
Early-Concept Grants for Exploratory Research	II.E.3
Research Advanced by Interdisciplinary Science and Engineering (RAISE)	II.E.4
Ideas Lab	II.E.6
Conference	II.E.9
Equipment	II.E.10
Travel	11.E.11

*GOALI and FASED requests may also be made in conjunction with new proposals.



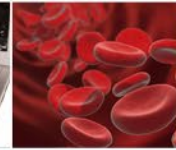
New Proposal: Planning Proposal

- Used to support initial conceptualization, planning and collaboration activities that aim to formulate new and sound plans for large scale projects
- Not intended to provide seed funding for a previously declined proposal or preliminary research
- NSF is especially interested in activities that would catalyze new collaborations that broaden participation
- Do not constitute any commitment on the behalf of the PI/Co-PIs to submit a future proposal, nor do they impact NSF's intent to support a future proposed project beyond the planning grant



New Proposal: Planning Proposal

- Project Description: no more than 8 pages
- Budget: up to \$100,000 per year (including indirect costs), up to two years duration
- Submit via [research.gov](https://www.research.gov)
 - Upload program officer approval via Supplementary Documentation section (entitle “Planning – Program Officer Concurrence Email)
- Only internal merit review is required (external review is optional)

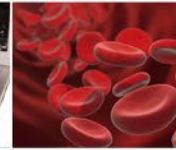


New Proposal: Rapid Response Research (RAPID) Proposal

- Used when there is a severe urgency with regard to availability or access to data, facilities or specialized equipment, including quick-response research on natural or anthropogenic events and similar unanticipated occurrences
- RAPID proposals are not for events that are unanticipated due to lack of awareness of timelines, or collection of only non-perishable data



WHERE DISCOVERIES BEGIN

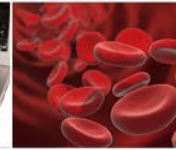


New Proposal: RAPID Proposal

- Project Description: no more than 5 pages
- Budget: up to \$200,000 (including indirect costs), up to one year in duration
- Submit via [research.gov](https://www.research.gov)
 - Upload program officer approval via Supplementary Documentation section (entitle “RAPID – Program Officer Concurrence Email”)
- Only internal merit review is required (external review is optional)



WHERE DISCOVERIES BEGIN

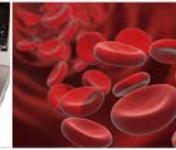


New Proposal: Early-concept Grants for Exploratory Research (EAGER) Proposal

- Supports exploratory work in its early stages on untested, but potentially transformative, research ideas or approaches
- EAGER proposals are NOT:
 - For planning grants
 - To support the collection of preliminary data, or
 - To provide services to NSF



WHERE DISCOVERIES BEGIN

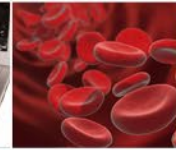


New Proposal: EAGER Proposal

- Project Description: no more than 8 pages
- Budget: up to \$300,000 (including indirect costs), up to two years in duration
- Submit via [research.gov](https://www.research.gov)
 - Upload program officer approval via Supplementary Documentation section (entitle “EAGER – Program Officer Concurrence Email”)
- Only internal merit review is required (external review is optional)

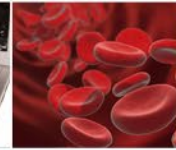


WHERE DISCOVERIES BEGIN



New Proposal: Research Advanced by Interdisciplinary Science and Engineering (RAISE) Proposal

- Supports bold, interdisciplinary projects whose:
 - Scientific advances extend beyond the scope of a single program or discipline
 - Lines of research promise transformational advances
 - Prospective discoveries reside at the interfaces of disciplinary boundaries
- Requires approval of at least two NSF program officers, in distinct programs



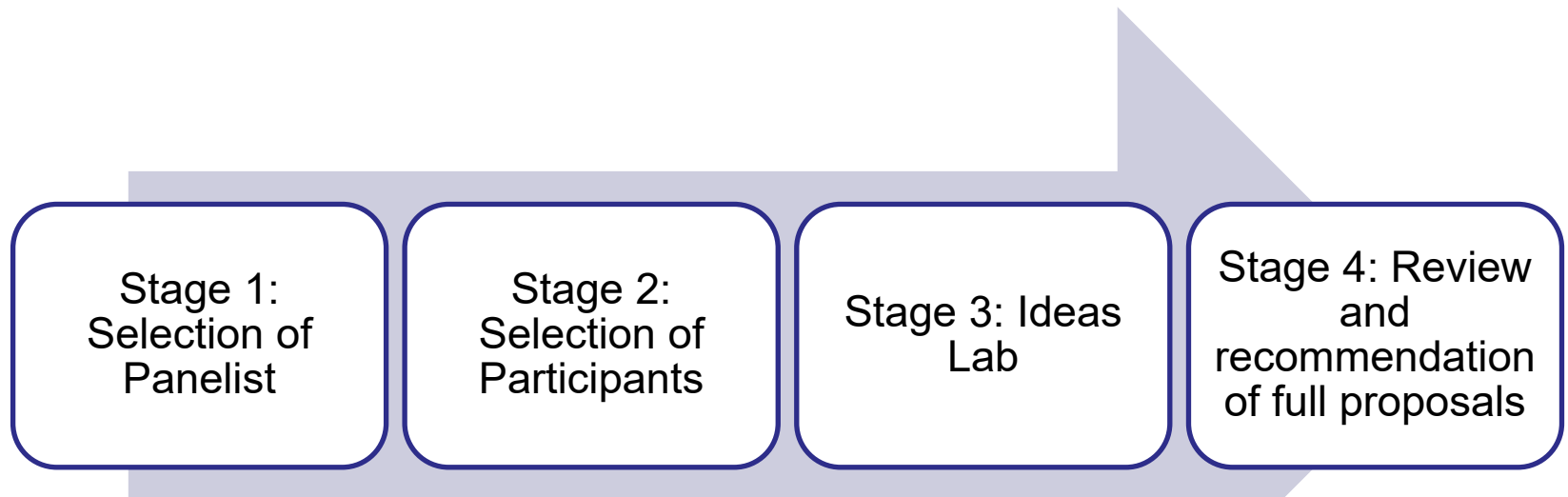
New Proposal: RAISE Proposal

- Compliant with Part 1 of PAPPG
- Must be submitted as a single proposal from one organization, with any collaborators identified as sub-awardee organizations
- Budget: up to \$1,000,000 (including indirect costs), up to five years in duration
- Submit via [research.gov](https://www.research.gov)
 - Upload 2 program officer approvals via Supplementary Documentation section (entitle “RAISE – Program Officer Concurrence Email”)
- Only internal merit review is required (external review is optional)

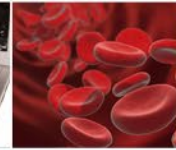


New Proposal: Ideas Lab Proposal

- Supports the development and implementation of creative and innovative project ideas that have the potential to transform research paradigms and/or solve intractable problems
- New and unproven ideas, approaches and/or technologies

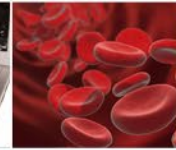


Note: Requires an Ideas Lab solicitation



New Proposal: Conference Proposal

- Supports conferences that bring experts together to discuss recent research or education findings or to expose other researchers or students to new research and education techniques
- Evaluated through the NSF merit review criteria – intellectual merit and broader impacts and supported ONLY if equivalent results cannot be obtained by attendance at regular meetings of professional societies
- Submit at least 1-year in advance of the scheduled conference date
- Conferences must be accessible to persons with disabilities
- Required policy or code of conduct that addresses all forms of harassment and includes accessible means of reporting violations

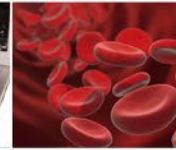


New Proposal: Conference Proposal

- For proposals in excess of \$50,000, Collaborators & Other Affiliations Information
- Cover Sheet
- Project Summary
- Project Description (not to exceed 15 pages)
 - Statement of need (and a list of topics)
 - Address both merit review criteria separately
 - A listing of recent meetings on the same subject (including dates and locations)
 - Names of chairperson and organizing committee (and organizational affiliations)
 - Location and probable dates
 - Organization of meeting
 - Recruitment Plan
 - Resources for Childcare
 - Results from prior NSF support (up to 5 years) or current funding (for each PI and co-PI)
- Budget and Budget Justification (see detailed list of potential conference costs)
- Facilities, Equipment and Other Resources
- Data Management Plan

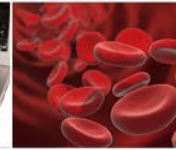


WHERE DISCOVERIES BEGIN



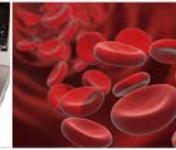
New Proposal: Equipment Proposal

- A proposal for specialized equipment may be submitted by an organization for
 - Individual investigators
 - Groups of investigators within the same department or several departments
 - Organizations participating in a collaborative or joint arrangement
- One individual must be designated as PI



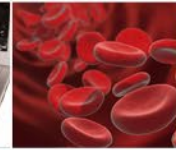
New Proposal: Equipment Proposal

- Collaborators & Other Affiliations Information
- Cover Sheet
- Project Summary
- Project Description (not to exceed 15 pages)
 - Overall acquisition plan (to include maintenance and operation)
 - Description of the project(s) for which the equipment will be used
 - A description of comparable equipment already at the proposing organization (if applicable), and an explanation of why it can not be used
 - Results from prior NSF support (up to 5 pages) – for PI and co-PIs
- Biographical Sketches of the persons who will have overall responsibility for maintenance and operation of the equipment and statement of qualifications
- Budget and Budget Justification
- Current and Pending Support
- Facilities, Equipment and Other Resources
- Data Management Plan
- Post-doctoral Mentoring Plan (if applicable)



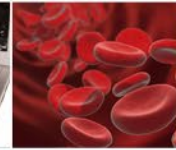
New Proposal: Travel Proposal

- To support travel (either domestic and/or international) for participation in scientific and engineering meetings
- Group travel proposals are encouraged
- A university, professional society or other non-profit organization may apply for funds to enable it to coordinate and support participation in one or more scientific meetings



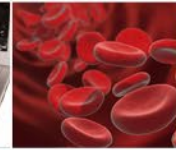
New Proposal: Travel Proposal

- Cover Sheet
 - AOR signature certifies that the meeting organizer has a written policy or code-of-conduct that addresses harassment
- Project Summary
- Project Description (not to exceed 15 pages)
 - Statement of need
 - Listing of recent meetings on the same subject (including dates and locations)
 - Information on the location and probable date(s) of the meeting
 - Statement of how the meeting will be organized, and how the results will be disseminated
 - Results from prior NSF support (up to 5 years) for PI and co-PI
- Budget and Budget Justification (see PAPPG for important details)
 - May request travel support only for the proposed activity
 - Recipients are required to retain supporting documentation that funds were spent in accordance with the original intent of the proposal. May be required for final reports, and subject to audit
- Current and Pending support
- Facilities, Equipment and Other Resources
- Data Management Plan



In Summary

- Supplemental funding requests and proposals submitted in response to this DCL must follow the guidance in the PAPPG
- All submissions must address both NSF merit review criteria, intellectual merit and broader impacts
- Prior to submission, consult with one of the HBCU-UP Program Officers about the idea and funding mechanism
 - Provide a short (no more than 1-page) description of the planned project
- There is no deadline for submissions
 - Requests made to the program before May 18, 2022, are likely to be considered before the end of the current fiscal year
- Proposal title: “PAPPG Requirement”: HBCU-UP: OPEN: Title



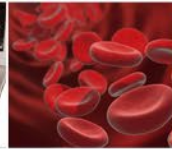
Stay Informed

- Join the HBCU-UP List Serv
 - To subscribe:
 - 1) Send an e-mail to LISTSERV@LISTSERV.NSF.GOV
 - 2) Leave the subject line blank
 - 3) The body of the message should say: subscribe HBCU
'your full name'

Example of the body of your message:

subscribe HBCU Percy Julian

- General Questions:
 - HBCU_UP@nsf.gov



Contact Information

Carleitta Paige-Anderson:

cpaigean@nsf.gov

(703)292-2816

LeRoy Jones II:

ljones@nsf.gov

(703) 292-4684

Jeremy Guinn:

jguinn@nsf.gov

(703) 292-8193

Tori Smith:

tosmith@nsf.gov

(703) 292-2315

Toni Edquist:

tedquist@nsf.gov

(703) 292-4649

Minerva Cordero:

mcordero@nsf.gov

(703) 292-4757