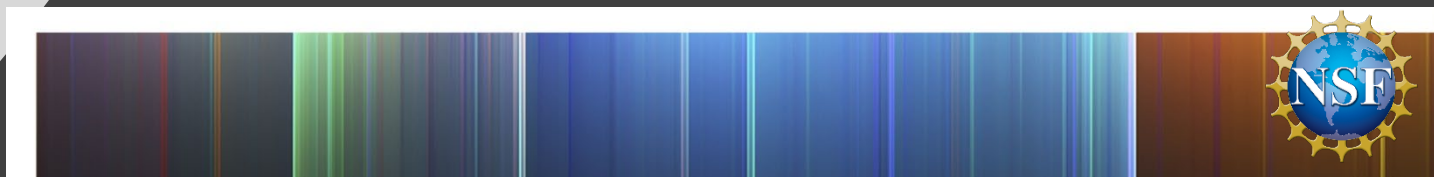


# Rotating Program Director Opportunities

## Division of Chemistry





# The Rotator Program

Temporary program director positions where you can make recommendations about which proposals to fund, influence new directions, support cutting-edge research, and mentor junior researchers.

## Today's Panel:



Dan Rabinovich  
University of North Carolina at Charlotte



Scott Rychnovsky  
University of California, Irvine



Marjorie Langell  
University of Nebraska - Lincoln





# Mutual Benefit of the Rotator Program

An opportunity for scientists and educators to have an impact on research and funding at the national level, survey the breadth of US and international research in real time, and gain new insights and experience.

A method for NSF to continue to have a strong connection to the needs and interests of the scientific community and identify important new directions.





# Key Benefits for Rotators



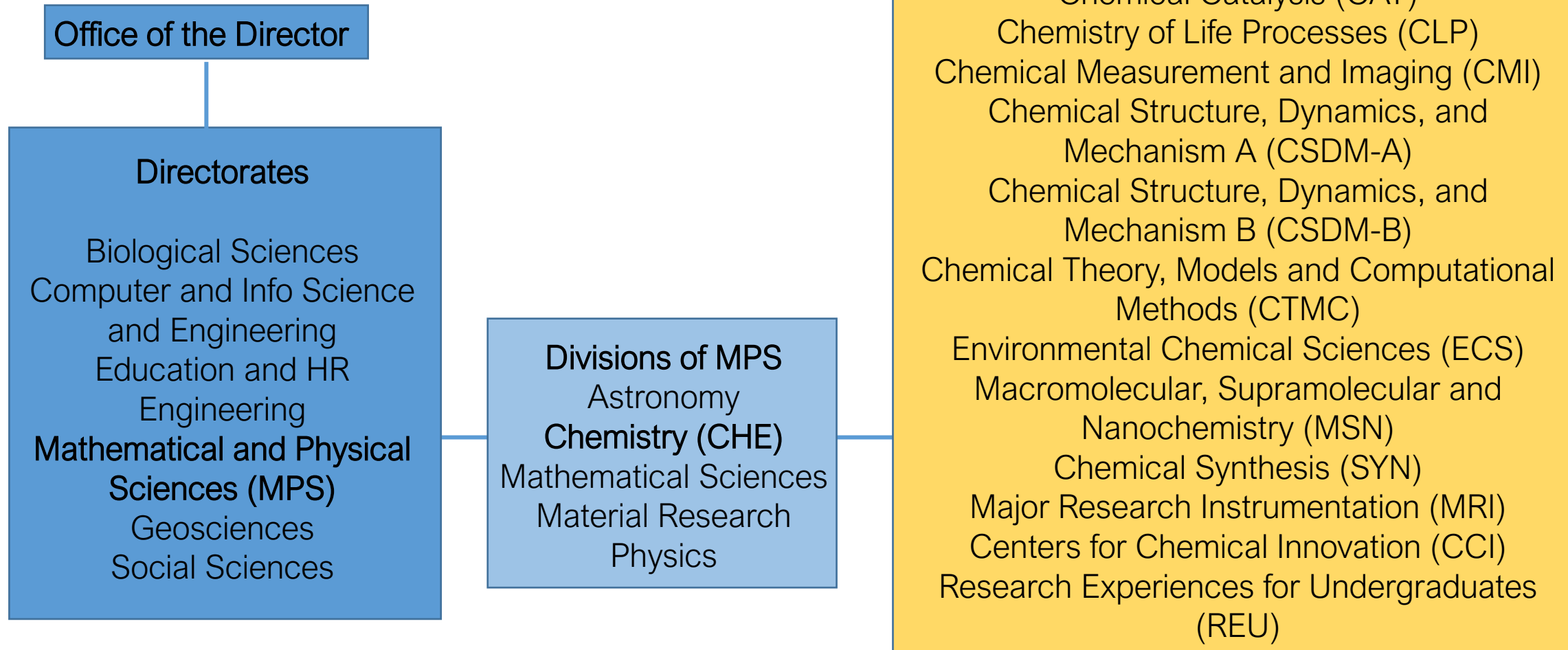
- Build relationships within NSF and with other agencies.
- Experience Division-, Directorate-, and Foundation-wide initiatives first-hand
- Continue your academic research through the IR/D program.
- Funds for relocation or accommodation in Alexandria, VA are provided.
- Enjoy the DC area, regional parks, entertainment, and historical sites







# Overview of the Division and Programs



# Division of Chemistry FY 2020



## Program Support Team



David Berkowitz  
Division Director



Lin He  
Acting Deputy Division Director



Gloria Yancey  
Program Support Manager



Debbie Jones  
Operations Specialist



Melissa Olson  
Associate PD., REU



Marsha Hawkins  
Program Analyst  
On Detail - MRI

## Technical Staff



Catalina Achim  
(CLP)



Kelsey Cook  
(CMI)



Colby Foss  
(CSDM-A, CCI)



Amanda Haes  
(MRI, MSN)



Bob Kuczkowski  
(MRI)



Carlos Murillo  
(MRI)



George Richter-Addo  
(CAT, SYN)



Kimberly Noble  
Program Specialist  
(CTMC, MSN, CMI)  
On detail



Darren Kimble  
Program Specialist  
(REU, CSDM-B, ECS)



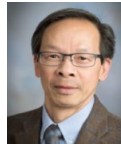
Laura Anderson  
(SYN, CAT)



Katharine Covert  
(CCI)



Max Funk  
(CLP)



P. Shing Ho  
(CLP)



Tingyu Li  
(CSDM-B)



John Papanikolas  
(MSN)



Anne-Marie Schmoltner  
(ECS)



S. Renee Ivey  
Program Specialist  
(CAT, CLP)



Valerie Maizel  
Program Specialist  
(CSDM-A, SYN)



Michelle Bushey  
(CCI, Spec. Proj.)



Richard Dawes  
(CTMC)



John Gilje  
(SYN)



Richard Johnson  
(CSDM-B)



Robin McCarley  
(CLP, CMI)



Rebecca Peebles  
(CSDM-A, MRI)



Herman Sintim  
(CLP, REU)



Angela Lyons  
Program Specialist  
On detail  
(CTMC, MSN,)



Nancy Carey  
Program Assistant  
(CCI)



Jin Cha  
(SYN)



Michel Dupuis  
(CTMC, CAT)



Evelyn Goldfield  
(CTMC)



George Janini  
(MSN)



Kenneth Moloy  
(CAT)



Charles Pibel  
(ECS)



Suk-Wah Tam-Chang  
(MSN)



Nicolay Tsarevsky  
(MSN)



Tong Ren  
(CAT)





# Core Workload for Rotator Positions

Temporary program director positions where you can make recommendations about which proposals to fund, influence new directions, support cutting-edge research, and mentor junior researchers.



- proposal review
- make recommendations for funding
- proposal/award management
- communication with community







# IR/D Program – Your Research

## Independent Research and Development Plan

Provides the opportunity for employees and individuals performing temporary service with NSF to maintain involvement with their professional research and research-related activities.



- up to 50 days per year
- travel to home institution and conferences
- 20% of workload
- no teaching or committee work







# CHE Rotator Recruitment Information

[che-recruit@nsf.gov](mailto:che-recruit@nsf.gov)

<https://beta.nsf.gov/careers/rotator-programs>

<https://beta.nsf.gov/careers/openings/mps/che/che-2020-1237>





# Past Rotator Experiences



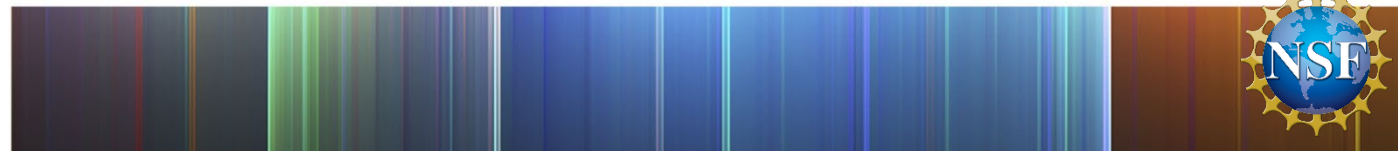
Dan Rabinovich  
University of North Carolina at Charlotte  
SYN & CLP: 2009 & 2011



Scott Rychnovsky  
University of California, Irvine  
SYN & CAT: 2015 – 2017



Marjorie Langell  
University of Nebraska – Lincoln  
CAT& MSN: 2014 – 2017



Questions?

ISF