



A Message from the Director of the National Science Foundation

Great partnerships can generate great outcomes. Good chemistry led to the discovery of new radioactive elements (Marie and Pierre Curie), a theoretical explanation of fission (Lise Meitner and Otto Robert Frisch) and the discovery of new objects in the solar system (Caroline and William Herschel). It spurred a revolution in computing (Gordon Moore and Bob Noyce), and, changed our approach to a great summer favorite -- ice cream (Ben Cohen and Jerry Greenfield).

NSF actively seeks partners to extend and enhance federal support of science and engineering (S&E). The agency's partnership network includes all of you: states, national labs, academia, foundations, industry and scientific societies as well as international organizations. Through partnerships, we can leverage perspectives, experience, and resources. We can build on NSF's unique role as a convener of a nationwide network of researcher and educators, and its "gold-standard" process of soliciting, reviewing, and funding of academic research and education. These collaborative efforts are essential to many of NSF's programs, from polar research to the Industry/University Cooperative Research Centers, to collaborative research solicitations with industry, to the Advanced Technological Education program and the highly successful EPSCoR program.



Advancing basic science and growth of the U.S. technical workforce require that we continue to search for new ways to strengthen NSF's current collaborations and to build vibrant, new partnerships that will expand the reach of federal investment in S&E. Working together we can touch more lives and make a more powerful impact.

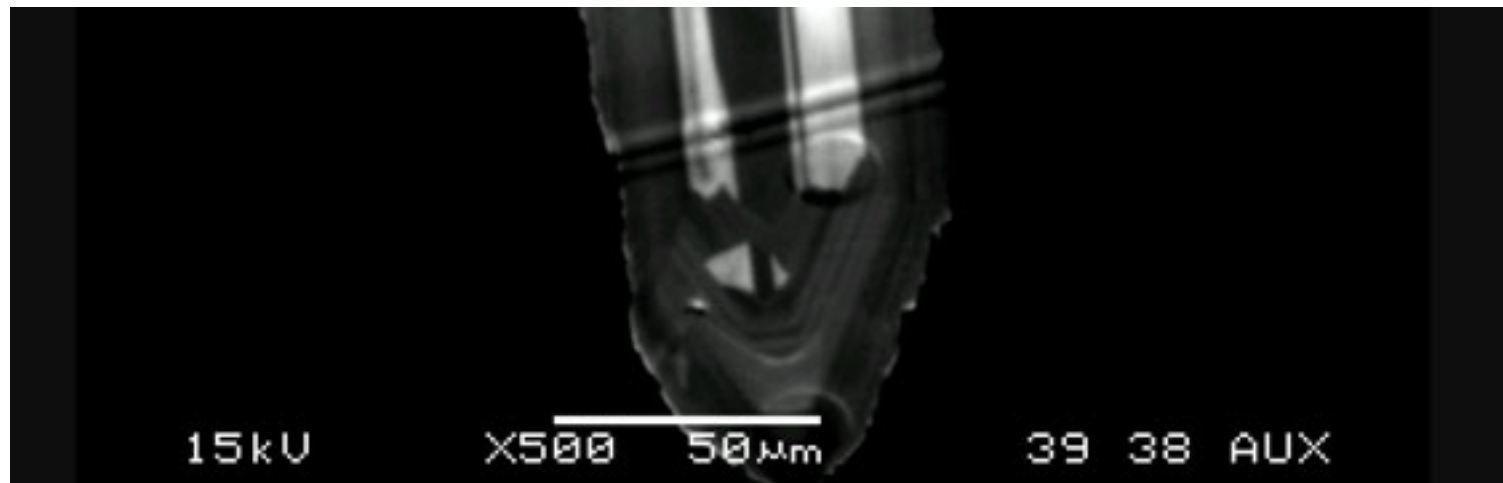
Dr. France A. Córdova
Director, National Science Foundation
[Visit my blog!](#)

Where Discoveries Begin...



[STEM for All video showcase](#)

Educators can access innovative learning content derived from federally funded research.



[New approach to predicting volcanic eruptions](#)

Magma crystals suggest volcanos are more snow cone than seething molten rock.



[The impact of "Maker" job opportunities for underserved teens](#)

A 3-D print shop gives teens work experience and provides a model for this STEM career path.

What's Next?

[In shielding law enforcement, Kevlar origami is on target](#): Engineering professors funded by NSF

have designed a new barrier to better protect people in danger during crisis situations.

[Solar science: Exploring the power of our closest star](#): It's the year of the Great American Eclipse—an opportunity to bring “solar science” into the spotlight.

[Subscribe](#)

[Tell us how NSF is making a difference in your community](#)



Our mailing address is:
National Science Foundation
2415 Eisenhower Avenue
Alexandria, VA 22314

[Add us to your address book](#)

Want to change how you receive these emails?
You can [update your preferences](#) or [unsubscribe from this list](#)